



## CUSTOMIZED CONVEYOR TECHNOLOGY

The right solution for your requirements - we are happy to offer you specific solutions for your project!

### Pallet conveyor technology

Our pallet conveyor technology is designed for full and empty pallets, mesh boxes, trays and other products up to a maximum weight of 500 kg.

The conveyor technology is made entirely of stainless steel and is therefore very robust, rust-free and durable.

The modular system consists of accumulating roller conveyors, roller conveyor, transfer unit, turntable and transfer units. The conveyor modules can be equipped with motorized rollers or geared motors.



### Chain conveyor systems

MOVE PRODUCTS QUICKLY & SAFELY

Chain conveyors are used to transport large and heavy unit loads.

They are particularly suitable for the safe transportation of workpiece carriers, as the drive is linear and constant without slippage.

Chain conveyors can be supplemented with lifting devices and can therefore also be used for discharging. Thanks to their robust design, they can also be used safely and reliably in rather critical ambient conditions.





## Vertical conveyor

### MATERIAL FLOW OVER SEVERAL LEVELS

The vertical conveyor enables material to flow over several levels and is suitable for transporting containers, cartons and trays in a vertical direction. The lifter is completely secured with protective cladding.

The free-standing steel scaffolding shaft can be attached to the ceiling opening or to the wall. As no separate machine room is required, the vertical conveyor can be easily integrated into existing buildings.

- Up to 12m height (across floors)
- Up to a maximum product weight of 50kg
- Various load handling devices (roller conveyors, chain conveyors, belt conveyors, etc.)
- Adjustable speeds via frequency inverter
- Very easy to maintain due to good accessibility

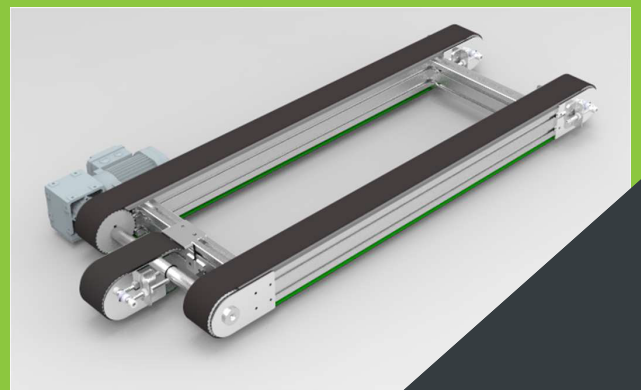


## Belt conveyor

### FAST TRANSPORT SYSTEM FOR UNIT LOADS IN PRODUCTION AND WAREHOUSING

Our belt conveyor systems enable work steps such as manual processing or assembly during the transportation of the piece goods. The belt conveyor works particularly quietly and enables a constant flow of goods.

The design depends on the desired transport speed and the load of the piece goods to be transported. In any case, the belt conveyor system can be integrated into existing or future conveyor systems.



Did we spark  
your interest

Visit us on  
[XPROMA.com](http://XPROMA.com)



Or send us an email:  
[info@xproma.com](mailto:info@xproma.com)

