

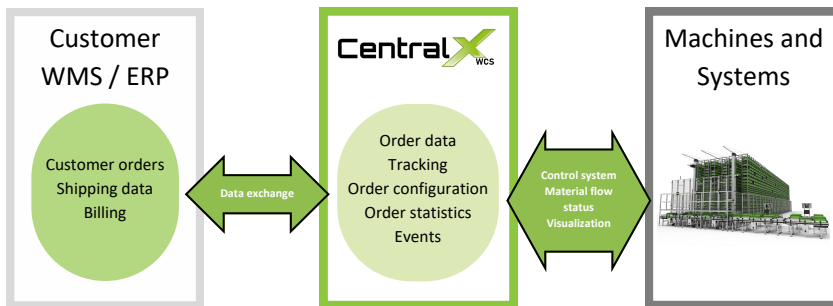
XPROMA

X SOFTWARE SOLUTIONS

Our services at a glance: Hardware and software from a single source



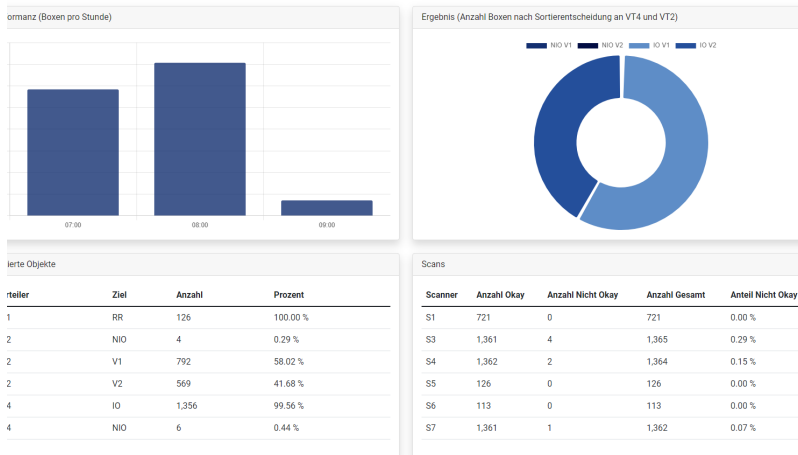
The material flow is taken over by the XPROMA WCS on the basis of customer order data and individual processes.



With our web-based application and to transmit the order data required for the automated process, we can connect to the customer's existing ERP or WMS system interfaces via various technologies (REST/API, SOAP, MQTT, file-based) without the need for extensive customization on the customer side.

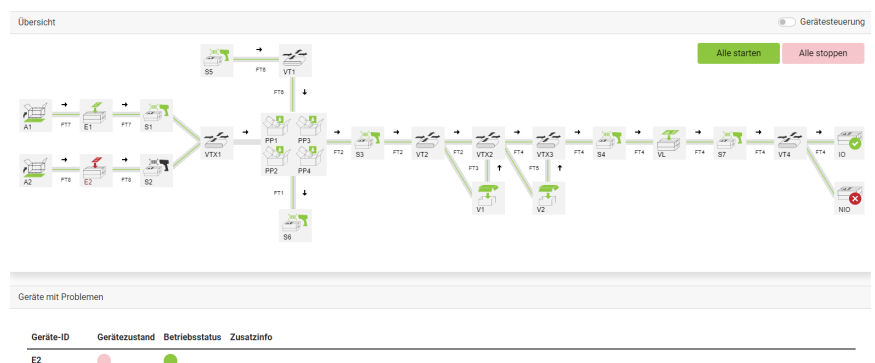
The individual systems and peripherals as well as the material flow are controlled by the XPROMA WCS on the basis of customer order data and individually implemented processes.

We can respond very flexibly to customer requirements.

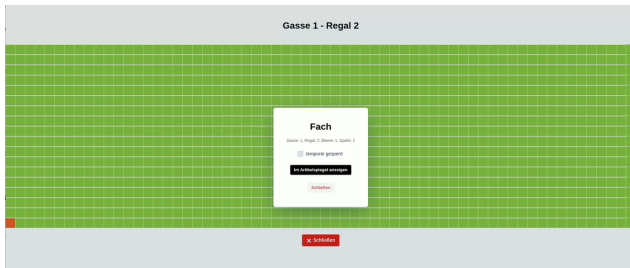


The XPROMA WCS also includes customized visualization and reporting of the automated line. This means that the status of the conveyor technology, machine or peripherals can be called up and viewed by the customer on any PC.

The system can be controlled via the same interface using intuitive operation.



Warehouse management system



Article management

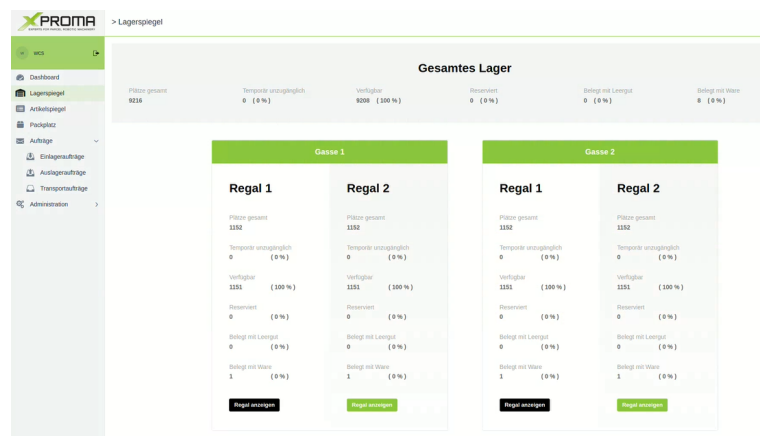
- Management of the article master
- Define warehouse-relevant properties
- Creating and deleting article master data

Container management

- Containers can be filled with different articles

Material management

- Global stock levels per item and batch.
- Processing of incoming goods.
- Inventory management.
- Batch and serial number tracking.
- Posting and recording of stock differences.
- Inventories (key date and permanent).
- Information system for displaying material data.



Notification system

- Registering messages and faults
- Printing fault statistics

Reporting

- Access to predefined warehouse statistics and lists

Order management

- Advice note
- Production orders
- production orders
- Sales orders

Did we spark your interest?

Visit us on
XPROMA.com



Or send us an email:
info@xproma.com



Externe Referenz	Arbeitsbezeichnung	Arbeitsnummer	Seitennummer	Quelle	Status	Erstellung	Aktionen
3535-ADF35353...	080 10E 384H	43003486	4006381133034	Schritzwelle	Ausstehend	heute, 15:45	[i] [d]
3535-ADF35353...	082 10E 384H	43003487	4006381133065	Schritzwelle	Ausstehend	heute, 15:45	[i] [d]
3535-ADF35353...	094 22B 384H	430035497	4006381133041	Schritzwelle	Ausstehend	heute, 15:45	[i] [d]
3535-ADF35353...	094 22B 387H	430035499	4006381133027	Schritzwelle	Ausstehend	heute, 15:45	[i] [d]
3535-ADF35353...	094 22B 387H	430035499	4006381133072	Schritzwelle	Ausstehend	heute, 15:45	[i] [d]

Storage space management

- Organization of storage space
- Various container storage locations
- Blocking and unblocking of bins and stocks
- Warehouse data information system
- Visualization of storage space

Externe Referenz	Arbeitsbezeichnung	Arbeitsnummer	Seitennummer	Quelle	Status	Erstellung	Aktionen
3535-ADF35353...	094 22B 387H	430035499	4006381133089	Schritzwelle	Ausstehend	heute, 15:45	[i] [d]
3535-ADF35353...	094 22B 387H	430035499	4006381133096	Schritzwelle	Ausstehend	heute, 15:45	[i] [d]
3535-ADF35353...	094 22B 387H	430035499	4006381133027	Schritzwelle	Ausstehend	heute, 15:45	[i] [d]
3535-ADF35353...	094 22B 387H	430035499	4006381133072	Schritzwelle	Ausstehend	heute, 15:45	[i] [d]
3535-ADF35353...	094 22B 387H	430035499	4006381133025	Schritzwelle	Ausstehend	heute, 15:45	[i] [d]
3535-ADF35353...	080 10E 384H	43003486	4006381133034	Schritzwelle	Abgeschlossen	heute, 15:45	[i] [d]
3535-ADF35353...	094 22B 384H	43003487	4006381133041	Schritzwelle	Abgeschlossen	heute, 15:45	[i] [d]
3535-ADF35353...	082 10E 384H	43003487	4006381133065	Schritzwelle	Abgeschlossen	heute, 15:45	[i] [d]